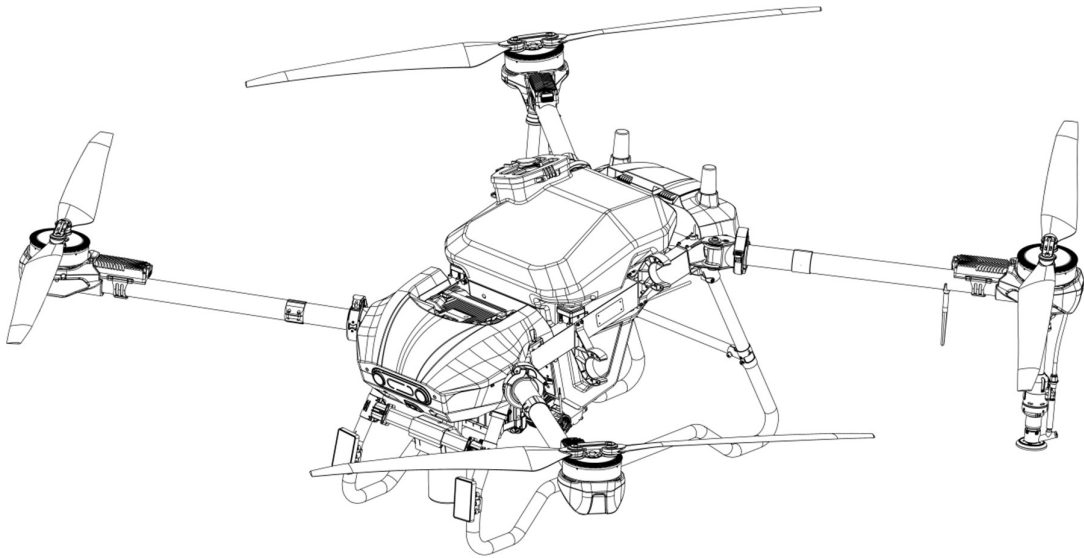


## Agricultural Drone Instruction Manual

# Map Planning

Version 1.0

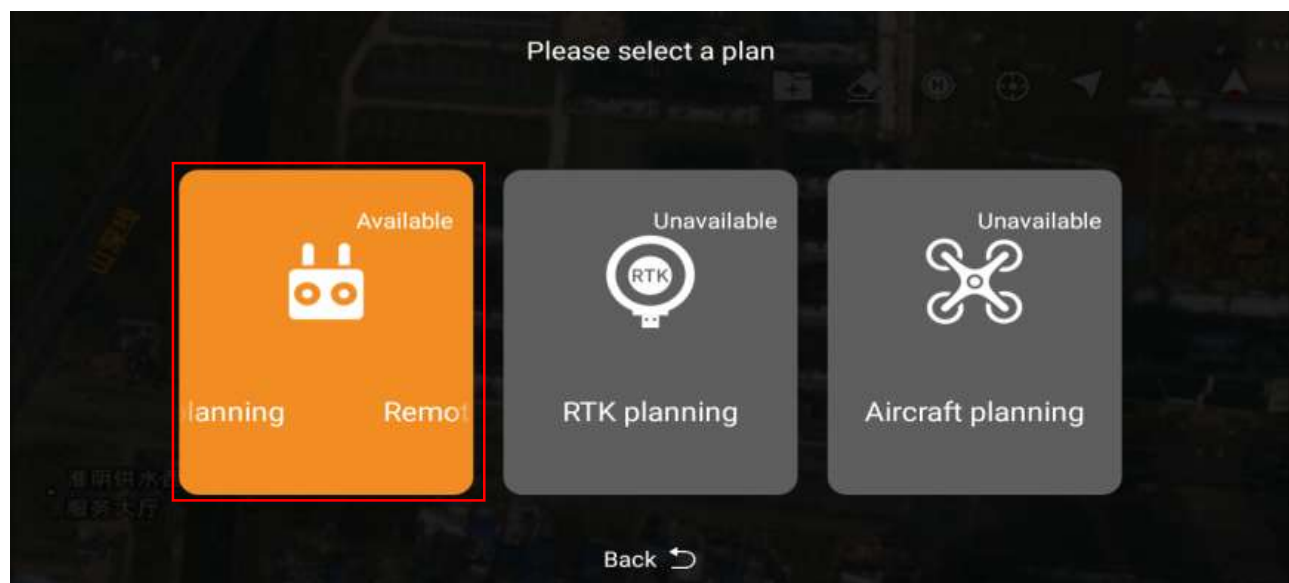


Map planning requires the pilot to be familiar with the terrain, and use satellite map to identify the obstacle locations, enabling rational planning of the operation plot. Since map planning can only provide a rough layout of the plot, it is not recommended for novice pilots to use this method.

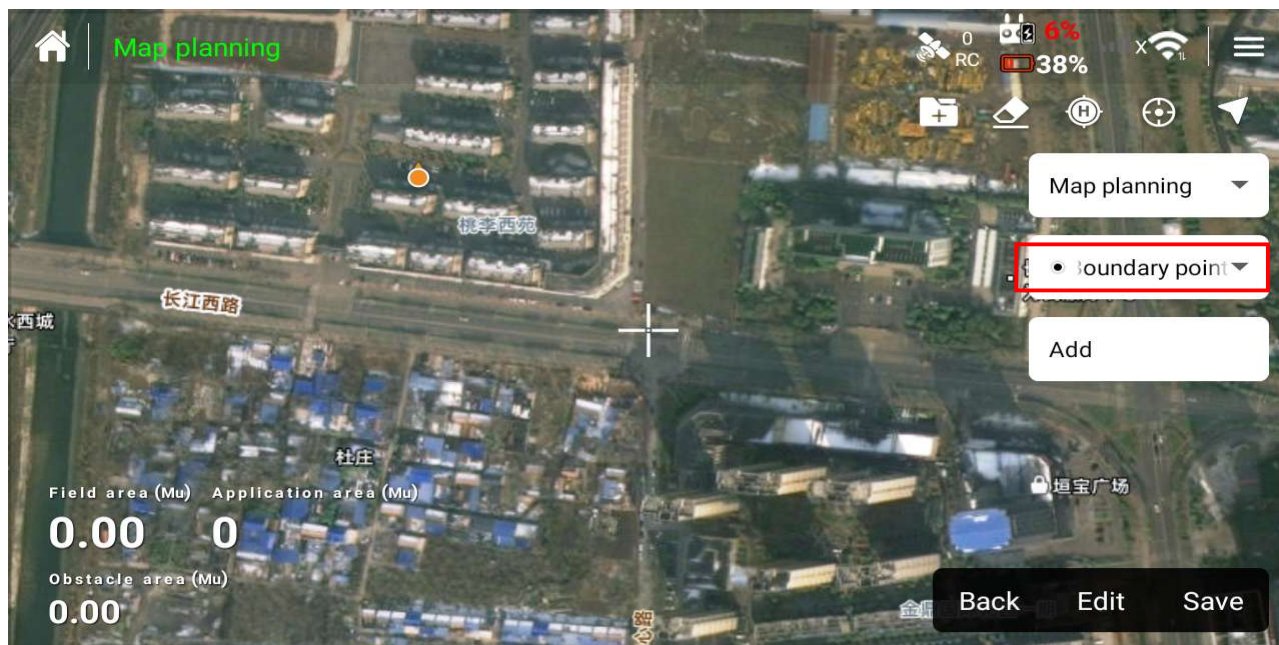
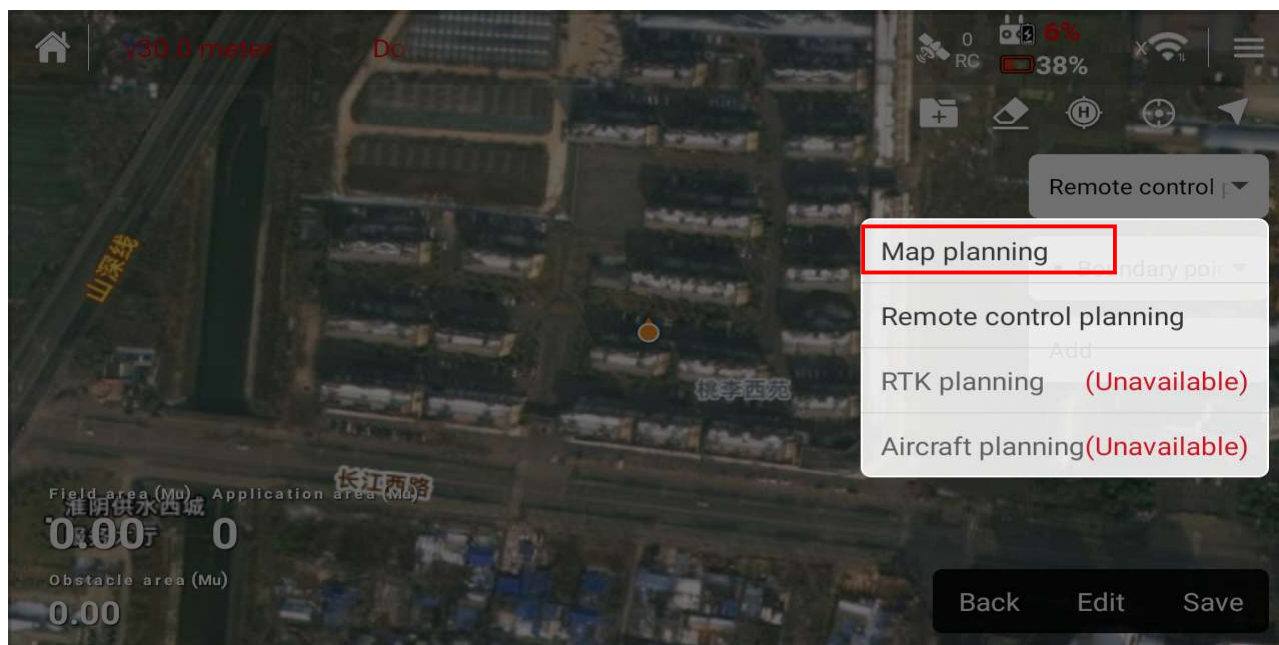
1. Click "Plan Fields" on the main interface of the remote control.



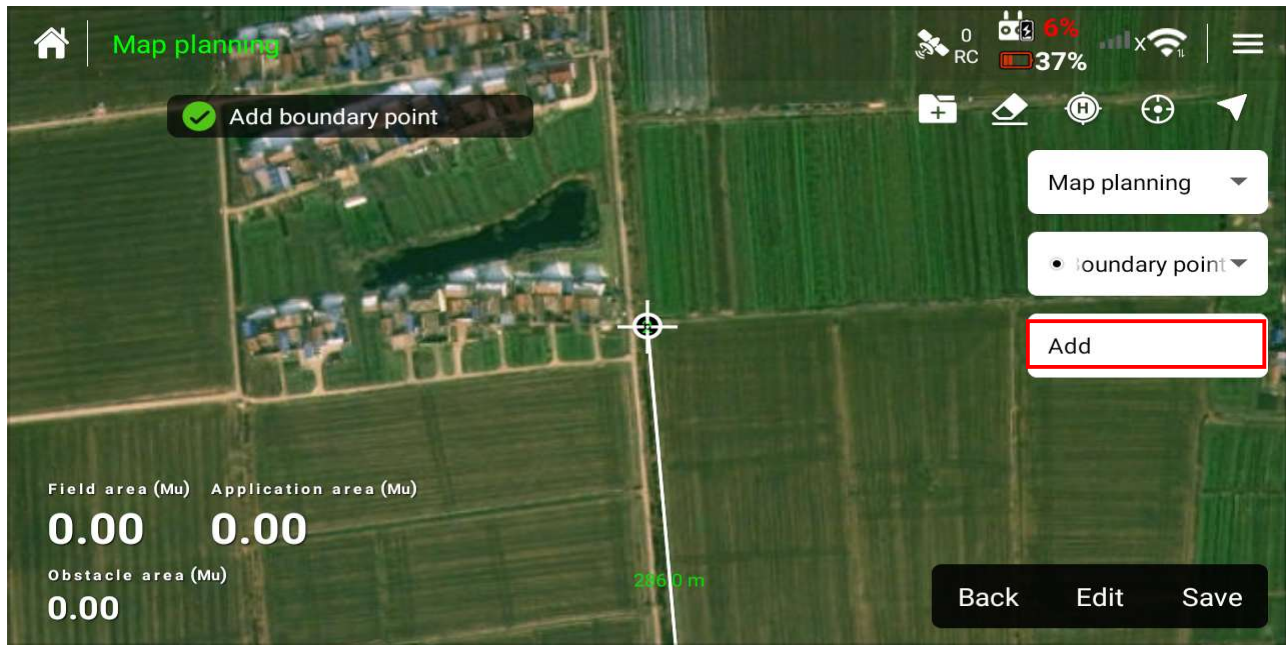
2. Select the "Remote control planning" mode.



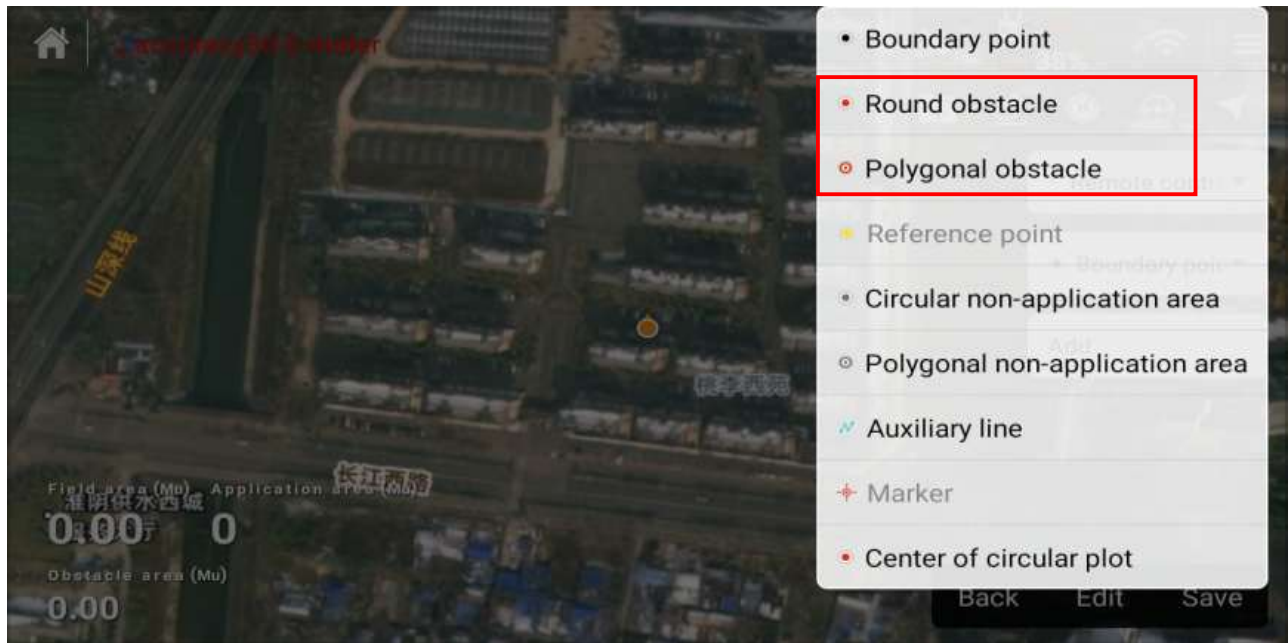
3. In the planning mode on the right, change the "Remote control planning" to "Map planning". The default GPS point position determination method of the system is "Boundary point".



4. According to the satellite map, click "Add" on the right side to add boundary point. Please note that you need to add boundary points one by one in order, whether clockwise or counterclockwise.



5. If there are obstacles in the operation area, you can click "Boundary point" on the right side, after expanding the drop-down list and select "Round obstacle" or "Polygonal obstacle" for detailed obstacles planning. The radius of the round obstacle is 3m by default.

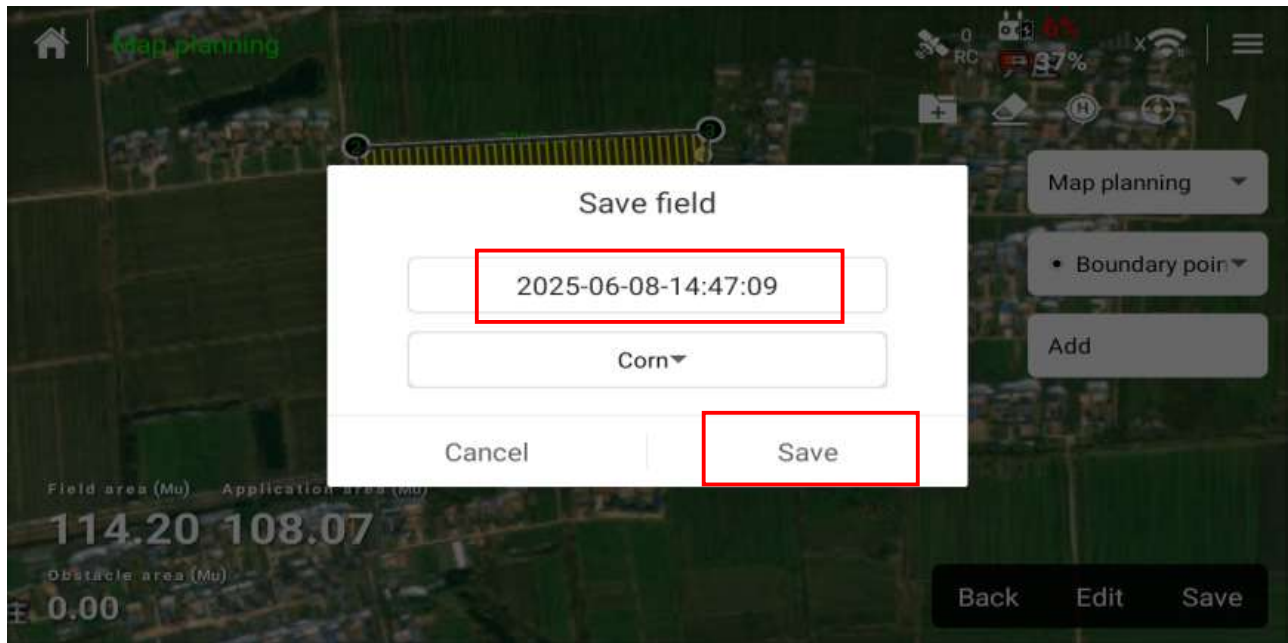




6. After the obstacle planning is complete, click "Finish".



7. After the plot is planned, click the "Save" in the lower right corner.



8. Enter the plot name in the pop-up window of "Save field" to complete the plot planning.